

M100 LEADING GRADUATE EMPLOYERS 2014

AND THE WINNERS ARE...

By **HYMA PILLAY**

hyma.pillay@leaderonomics.com

Winners and renowned guests gathered in their most elegant and sophisticated attire last night at the Grand Hyatt, Kuala Lumpur for the 7th Malaysia's 100 (M100) Leading Graduate Employers Awards Night.

This year, these 17 excellent companies succeeded in being the leads in the following categories, with Maybank taking the win as the Leading Graduate Employer of 2014.

Accounting and Professional Services:	EY (Ernst & Young)
Banking and Financial Services:	Malayan Banking Bhd
Broadcasting/Media:	Media Prima Group
Consulting:	EY (Ernst & Young)
Education:	Taylor's Education Group
Energy/Oil and Gas/Utilities:	Petroleum Nasional Bhd
FMCG/Retail:	Nestle
Government-linked Companies:	Permodalan Nasional Berhad
ICT and Multimedia:	IBM Malaysia
Insurance:	Great Eastern Life Assurance
Leisure, Travel and Hospitality:	AirAsia
Manufacturing - Automotive:	BMW Group (BMW, Mini, Rolls-Royce)
Manufacturing - Chemical and Heavy Industries:	Chemical Company of Malaysia (CCM)
Manufacturing - Electronics:	Samsung Malaysia
Pharmaceutical:	Pharmaniaga
Plantation/Property and Construction:	Sime Darby
Telecommunications:	Maxis Communications

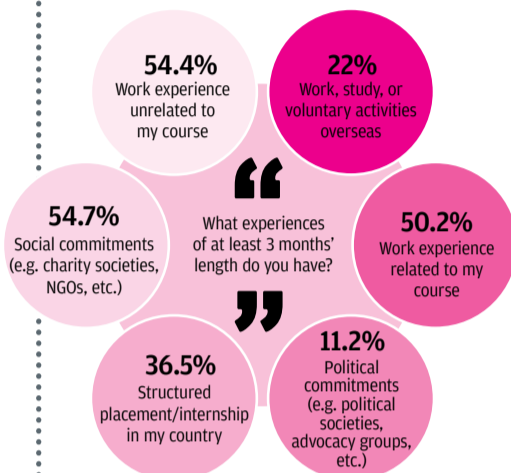
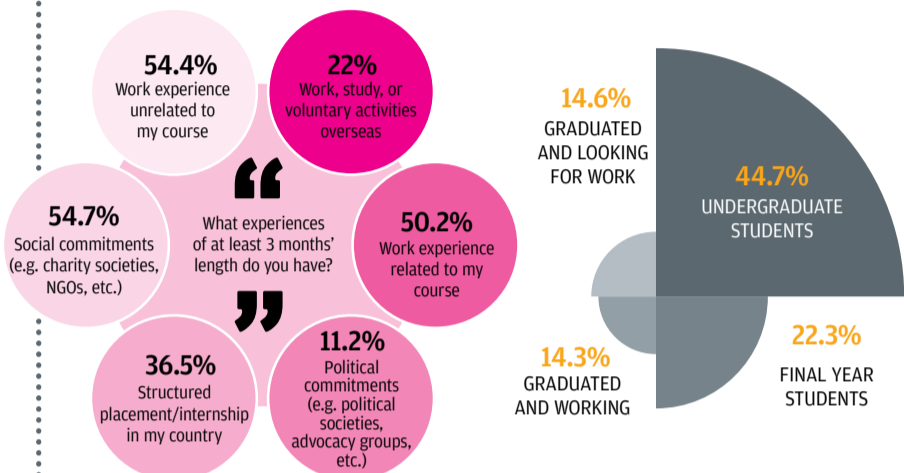


The M100 Awards is the largest graduate recruitment awards in Malaysia. Each year, they accumulate thousands of votes from undergraduates and recent school-leavers, welcome hundreds of distinguished guests, and present 16 highly-competed-for awards to recognise the most popular graduate recruiters in all of Malaysia.

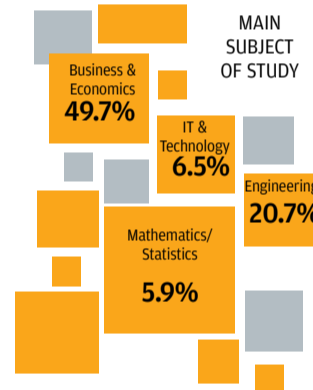
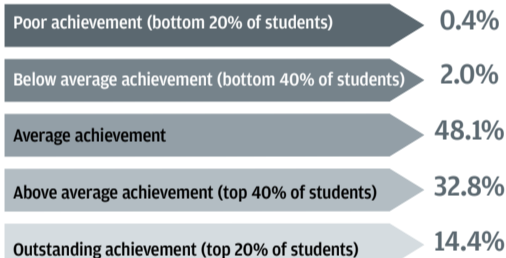
More than 14,000 respondents took part in the survey in 2014, signifying a growth in the number of students and fresh graduates who have contributed to determining the latest graduate recruitment trends via a comprehensive study held across Malaysian campuses.

WHO VOTED FOR THEM?

14,760 Respondents



ACADEMIC ACHIEVEMENTS



WHAT DO THEY WANT?

RM3,140

HOW MUCH DO YOU EXPECT TO EARN IN YOUR FIRST PROFESSIONAL POSITION?

How many years are you prepared to work in this position?

4.6 years

13.6 applications

How many applications do you expect to send to find your first professional position?

8.1 hours

How many hours (per day) are you prepared to work in this position?

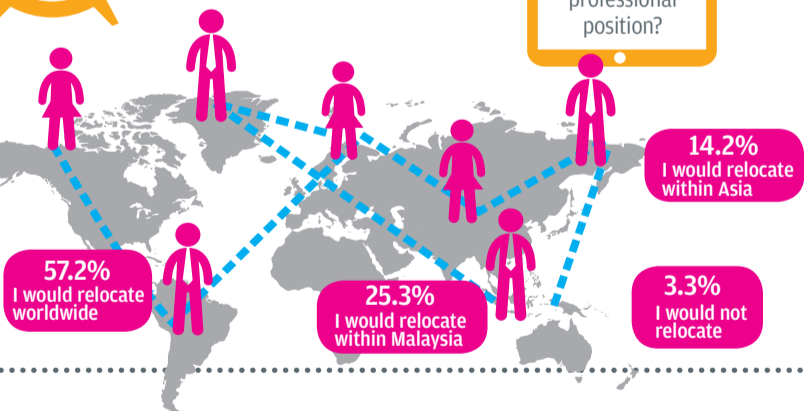
How many months do you expect to need to find your first professional position?

3.9 months

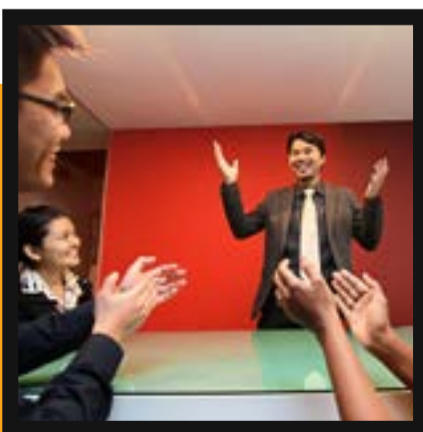
How important are the following factors for you when choosing an employer? (Most important and least important)



Would you relocate for an attractive job offer?



Also next week



The **right leadership** development model

Be a **disruptor** or be **disrupted**

Left brain vs **right** brain

Tongue: the double-edged sword

